

SURGiNG

紹 鑫 實 業



Midget Fuse

新能源熔断器

BS88-690 Series

BS88-690 Semi-conductor Fuse



英制BS88快速半导体熔断器 BS88 High speed semi-conductor Fuse



测试标准:
Testing Standard:
UL248-1 UL248-13

额定分断能力:
Interrupting Rating:
20000 Amperes at 750V DC
50000 Amperes at 750V AC

工作温度:
Operating Temperature:
-55°C~+125°C

材料/Material:

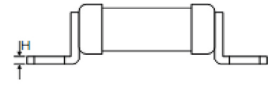
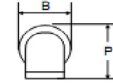
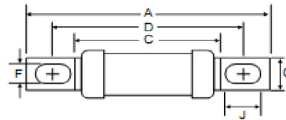
Terminals: Tin plated copper
Tube: Ceramic Tube
Element: Silver alloy
Filler: Silica Sand

电气特性: Electrical Characteristics

| % Ampere Rating | Opening Time |
|-----------------|------------------|
| 100% | 4Hours Min. |
| 200% | 300 Seconds Max. |

产品尺寸: Dimension

| Rated Current | A±2 | B±1 | C±2 | D±1.5 | F±0.8 | G±0.8 | P±1 | H±0.5 | J±0.8 |
|---------------|-----|------|-----|-------|-------|-------|-----|-------|-------|
| 10-100A | 75 | 17.5 | 45 | 62.5 | 6.7 | 12.5 | 19 | 2 | 9.5 |
| 125-225A | 90 | 29 | 54 | 72 | 8.2 | 20 | 31 | 3 | 11 |
| 250-400A | 113 | 38 | 50 | 85 | 10.3 | 25.4 | 41 | 3 | 13.5 |



目录编号/Catalog No.: 编号中V750表示750VDC, V500,V600,V700分别表示500V, 600V, 700V DC; 末尾的A/B表示不同的安装脚尺寸。

| 目录编号 Catalog No. | 额定电流 Ampere Rating | 额定电压 Voltage Rating | Energy Integrals I2t(A2S) | | | 功耗(w) Power Loss | 认证 Approvals |
|---------------------|-----------------------|------------------------|---------------------------|---------|---------|---------------------|--------------|
| | | | Pre-Acting | at 500V | at 690V | | |
| HCT-10A | 10A | 690VAC/500VDC | 7 | 30 | 48 | 3 | ● |
| HCT-12A | 12A | 690VAC/500VDC | 10 | 40 | 65 | 3 | ● |
| HCT-16A | 16A | 690VAC/500VDC | 16 | 66 | 110 | 6 | ● |
| HCT-20A | 20A | 690VAC/500VDC | 32 | 150 | 220 | 7 | ● |
| HCT-25A | 25A | 690VAC/500VDC | 25 | 150 | 250 | 7 | ● |
| HCT-30A | 30A | 690VAC/500VDC | 30 | 180 | 270 | 9 | ● |
| HCT-32A | 32A | 690VAC/500VDC | 32 | 190 | 375 | 9 | ● |
| HCT-35A | 35A | 690VAC/500VDC | 33 | 200 | 290 | 10 | ● |
| HCT-40A | 40A | 690VAC/500VDC | 52 | 180 | 300 | 11 | ● |
| HCT-45A | 45A | 690VAC/500VDC | 76 | 270 | 450 | 11 | ● |
| HCT-50A | 50A | 690VAC/500VDC | 103 | 380 | 600 | 12 | ● |
| HCT-63A | 63A | 690VAC/500VDC | 135 | 480 | 750 | 13 | ● |
| HCT-75A | 75A | 690VAC/500VDC | 210 | 600 | 950 | 17 | ● |
| HCT-80A | 80A | 690VAC/500VDC | 250 | 900 | 1500 | 20 | ● |
| HCT-100A | 100A | 690VAC/500VDC | 470 | 1800 | 2800 | 23 | ● |
| HFT-125A | 125A | 690VAC/500VDC | 960 | 3900 | 5800 | 30 | ● |
| HFT-150A | 150A | 690VAC/500VDC | 1100 | 4500 | 6500 | 38 | ● |
| HFT-160A | 160A | 690VAC/500VDC | 1200 | 5500 | 8500 | 39 | ● |
| HFT-160A | 160A | 690VAC/500VDC | 1200 | 5500 | 8500 | 39 | ● |
| HFT-180A | 180A | 690VAC/500VDC | 1400 | 7500 | 13500 | 40 | ● |
| HFT-200A | 200A | 690VAC/500VDC | 2600 | 10500 | 18500 | 40 | ● |
| HFT-225A | 225A | 690VAC/500VDC | 3700 | 14500 | 26500 | 44 | ● |
| HFT-250A | 250A | 690VAC/500VDC | 5200 | 20500 | 37500 | 47 | ● |
| HMT-280A | 280A | 690VAC/500VDC | 7000 | 30500 | 55000 | 48 | ● |
| HMT-315A | 315A | 690VAC/500VDC | 10000 | 40000 | 77000 | 54 | ● |
| HMT-350A | 350A | 690VAC/500VDC | 15000 | 60000 | 105000 | 55 | ● |
| HMT-400A | 400A | 690VAC/500VDC | 2000 | 85000 | 145000 | 60 | ● |

Time-Current Characteristics
电流-时间曲线图

